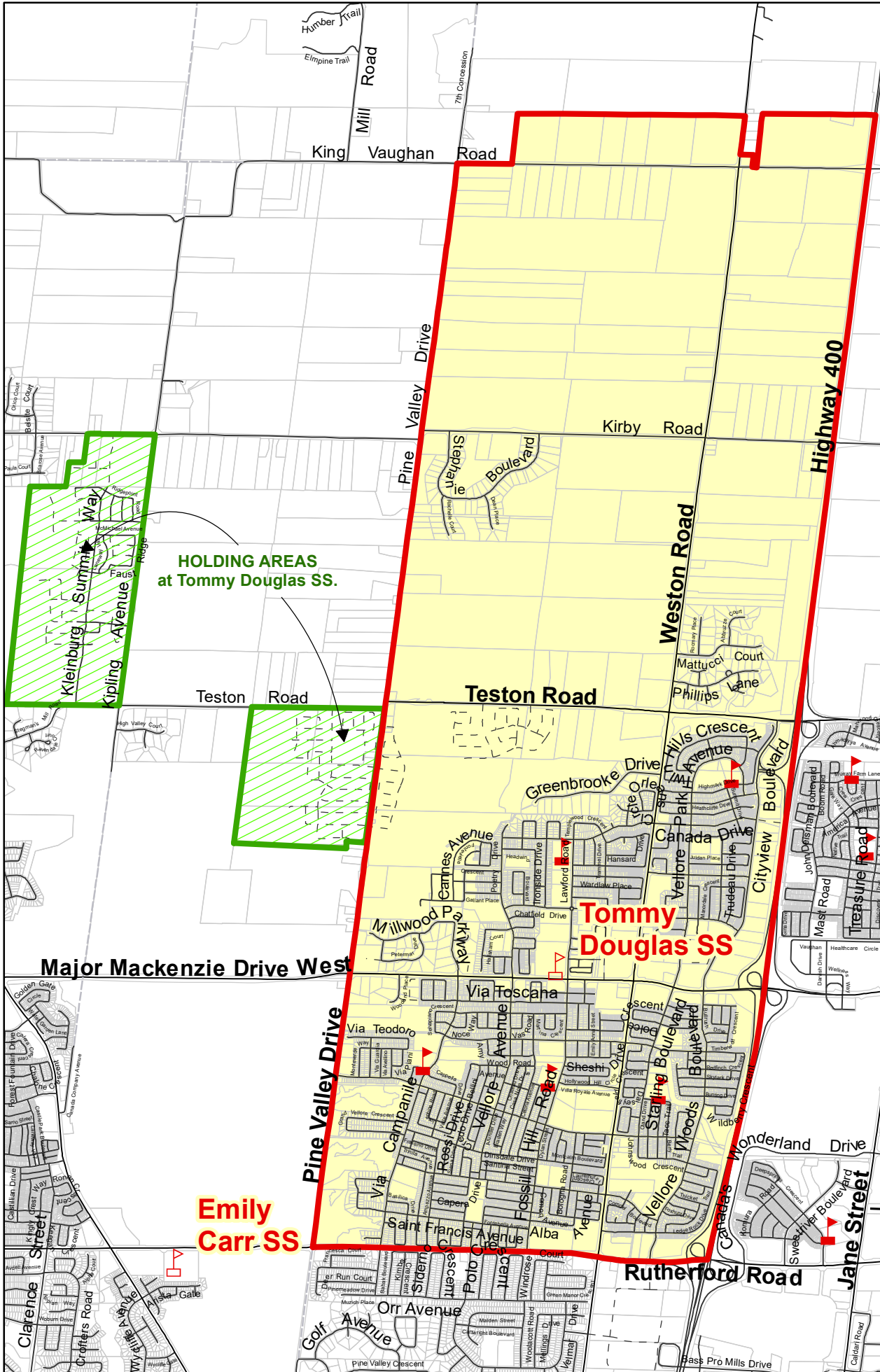


# Tommy Douglas SS, City of Vaughan



**HOLDING AREAS  
at Tommy Douglas SS.**

**Emily  
Carr SS**

**Tommy  
Douglas SS**

**Legend**

- Elementary School
- Secondary School
- School Boundary
- Parcel
- Road
- Proposed Road
- Railway
- Creek/River
- Holding Area

**Vaughan  
Secondary School  
Boundaries**

**Notes**

Tommy Douglas SS will be holding new development areas west of Pine Valley Drive and Kipling Avenue. See map for details.

Boundary Approved:  
June 2013  
Map Updated:  
February 2018

