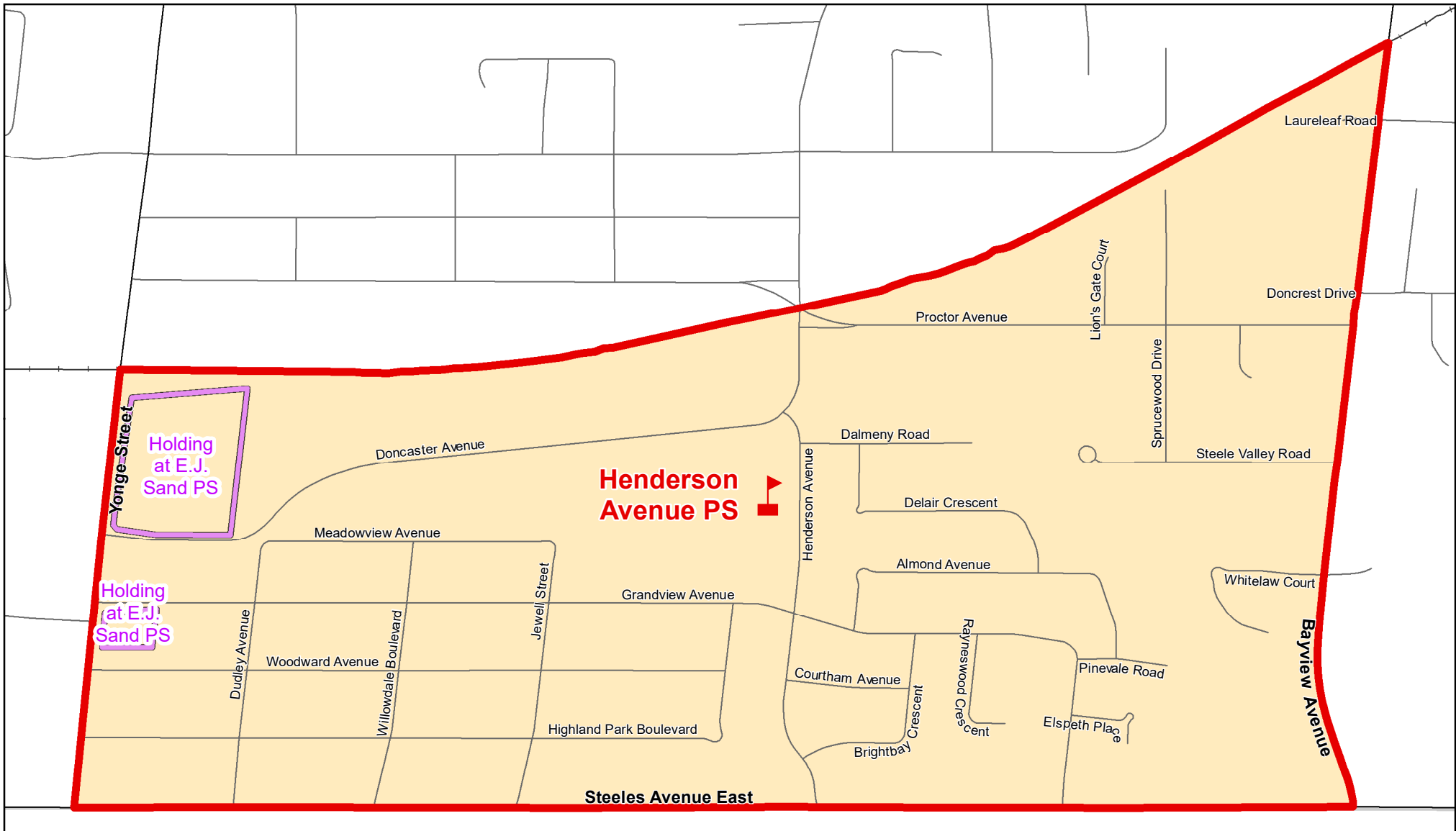





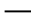




Henderson Avenue PS, City of Markham



Legend

- | | | |
|---|---|---|
|  Elementary School |  School Boundary |  Urban Road |
|  Secondary School |  Holding Area |  Regional Road |
| |  Railway |  Proposed Road |



Notes

Holding areas noted above will be held at E.J. Sand PS.
Please see map for details.

Boundary Approved: 1997

Map Updated: November 2019