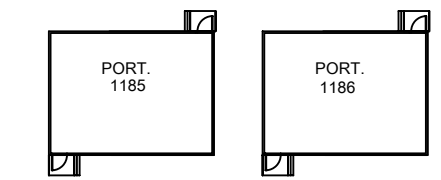


2000  
10 219 sqm

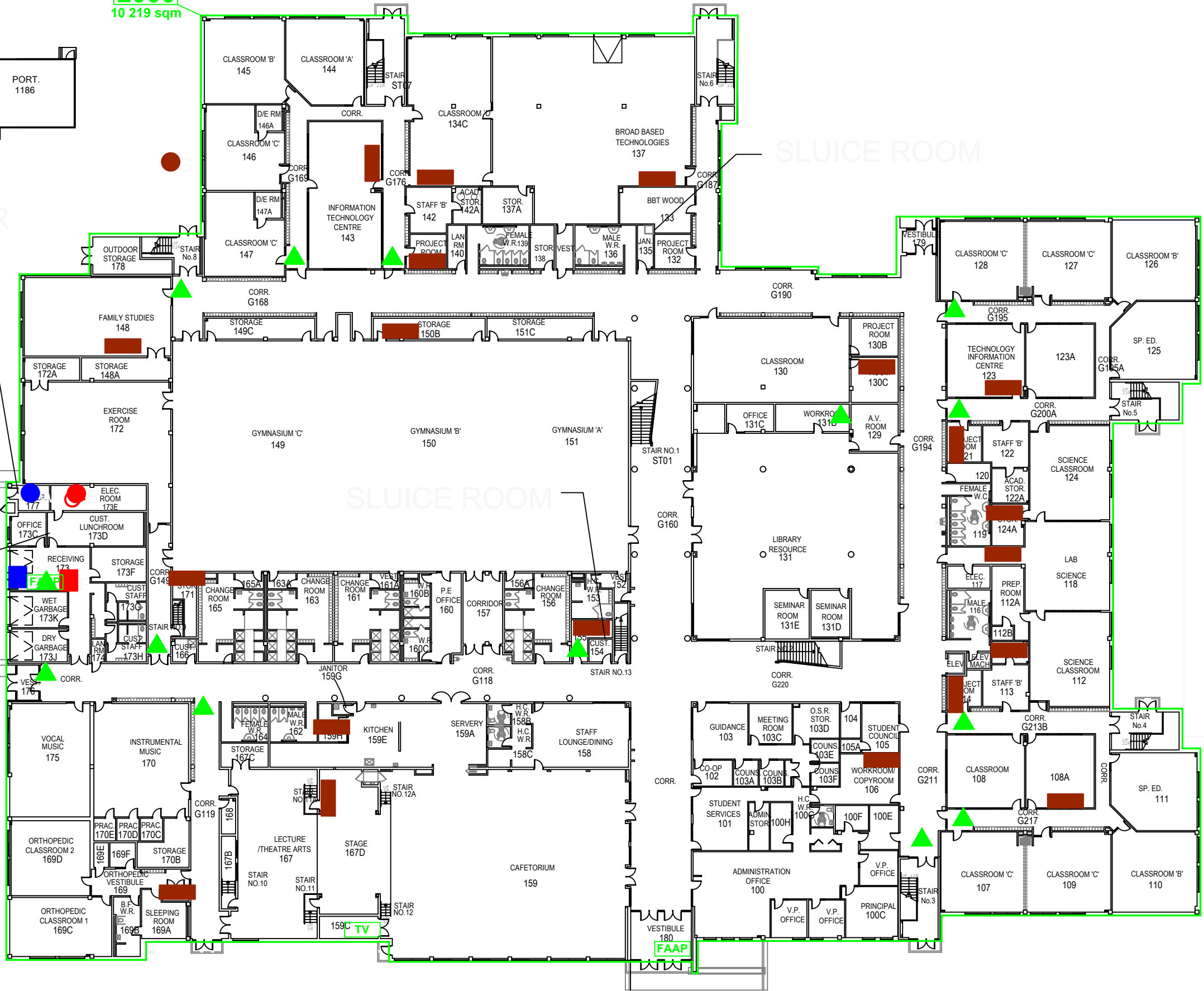
**FIRE SUPPRESSION SYSTEM LEGEND**

- FACP FIRE ALARM CONTROL PANEL
- FAAP FIRE ALARM ANNUNCIATOR PANEL
- SV SUPERVISORY VALVE
- FV FLOW VALVE
- TV TEST VALVE
- FL FLUSH LINES
- AD AUXILIARY DRAIN
- ⊖ FIRE ALARM PANEL BREAKER



SPRINKLER ROOM

CARETAKER'S ROOM



LEGEND

- FIRE PANEL
- ▲ LIGHT SWITCHES-HALL
- SECURITY PANEL
- KEY BOX
- MAIN ELECTRICAL SHUTOFF
- MAIN WATER SHUT OFF
- MAIN GAS SHUT OFF
- ▼ CARD CONTROLLED ACCESS
- BREAKER BOXES

NO.	DATE	DESCRIPTION
2	OCT./16	PORTABLES ADDED
1	AUG./15	RMS. 146 & 147 ALTERATION

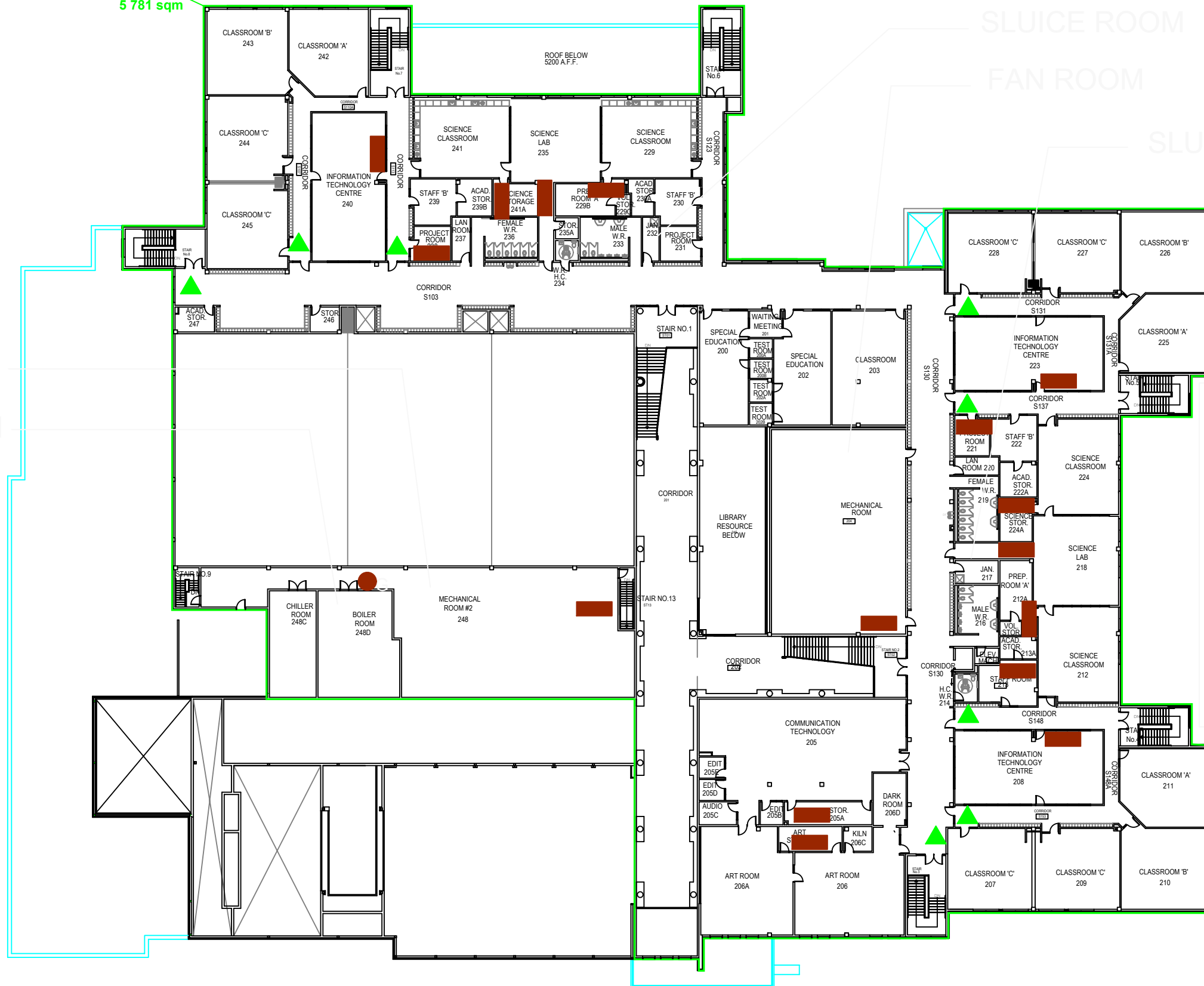
REVISIONS



**GROUND FLOOR PLAN  
SIR WILLIAM MULOCK SECONDARY SCHOOL**

DRAWN BY	VM	SCALE	NTS
CH'D BY		DWG.No.	
DATE	MAR 03		<b>N112-1</b>

2000  
5 781 sqm



**LEGEND**

- FIRE PANEL
- ▲ LIGHT SWITCHES-HALL
- SECURITY PANEL
- KEY BOX
- MAIN ELECTRICAL SHUTOFF
- MAIN WATER SHUT OFF
- MAIN GAS SHUT OFF
- ▼ CARD CONTROLLED ACCESS
- BREAKER BOXES

NO.	DATE	DESCRIPTION
REVISIONS		
DRAWN BY	VM	SCALE NTS
CH'D BY		DWG.No.
DATE	OCT./09	<b>N112-2</b>



**SECOND FLOOR PLAN**  
**SIR WILLIAM MULOCK SECONDARY SCHOOL**