



Anne Frank PS Contingency Planning

June 18, 2014

Introductions

- Joel Hertz, Trustee
- J. Parappally, Superintendent of Schools
- Aneta Fishman, Principal of Anne Frank PS
- Wendy Thompson, Principal of Nellie McClung PS
- Vincent Anania, Principal of Forest Run PS
- Kim Wagner, Principal of Ventura Park PS
- Hanada Kardassopoulos, Principal of Joseph A. Gibson PS
- Jerry Stoangi, Senior Manager of Plant Services
- Dawn Adams & Sonja Meehan, Planning Services

Contingency Planning

- Due to multiple issues Anne Frank PS may need to open late (mid-Sept to mid-Oct)
- **All efforts are focused on opening school on time (accelerated construction schedule)**
- Each family will be contacted in mid-August regarding timing of opening
- Back up plan for student accommodation

**If Anne Frank PS does not open on
time**

If your home school is Nellie McClung PS

- All students who reside in the Nellie McClung PS boundary and attended Nellie McClung PS this year will remain there
- The two schools will be organized separately in one building to accommodate Anne Frank PS students and reduce disruption once it opens
- All rooms in Nellie McClung PS will be used

If your child is currently 'holding' at Nellie McClung PS

- If you reside in the Anne Frank PS boundary, your child will continue to attend Nellie McClung PS until Anne Frank PS opens
- Separate Anne Frank PS classes will be organized in Nellie McClung PS

If your child is currently 'holding' at Forest Run PS

- If you reside in the Nellie McClung PS boundary and were sent to Forest Run PS on overflow, then your child will return to Nellie McClung PS in September 2014
- If you reside in the Anne Frank PS boundary, and were sent to Forest Run PS on overflow, your child will continue to be 'held' at Forest Run PS until Anne Frank PS opens (current JK students)
- Separate Anne Frank PS classes will be organized in Forest Run PS

If your child is already pre-registered for Anne Frank PS – (did not attend Nellie McClung PS or Forest Run PS)

- New Kindergarten students will all be 'held' at Forest Run PS in Anne Frank PS classes
- New registrants (grades 1 – 8) will be 'held' in Anne Frank PS classes at Nellie McClung PS as class size permits

New registrants for Anne Frank PS – as of June 19, 2014

- New Kindergarten students will all be 'held' at Forest Run PS in Anne Frank PS classes
- New registrants (grades 1 – 8) will be 'held' in Anne Frank PS classes at Nellie McClung PS as class size permits
- Once Anne Frank PS classes fill - students will then be overflowed to Forest Run PS

Once Anne Frank PS opens

- All Anne Frank PS classes organized at Nellie McClung PS and Forest Run PS will move to new school when it opens
- For new registrants for Anne Frank PS that are sent on overflow to Forest Run PS may need to remain the entire school year

French Immersion

If Your Child is Registered for French Immersion

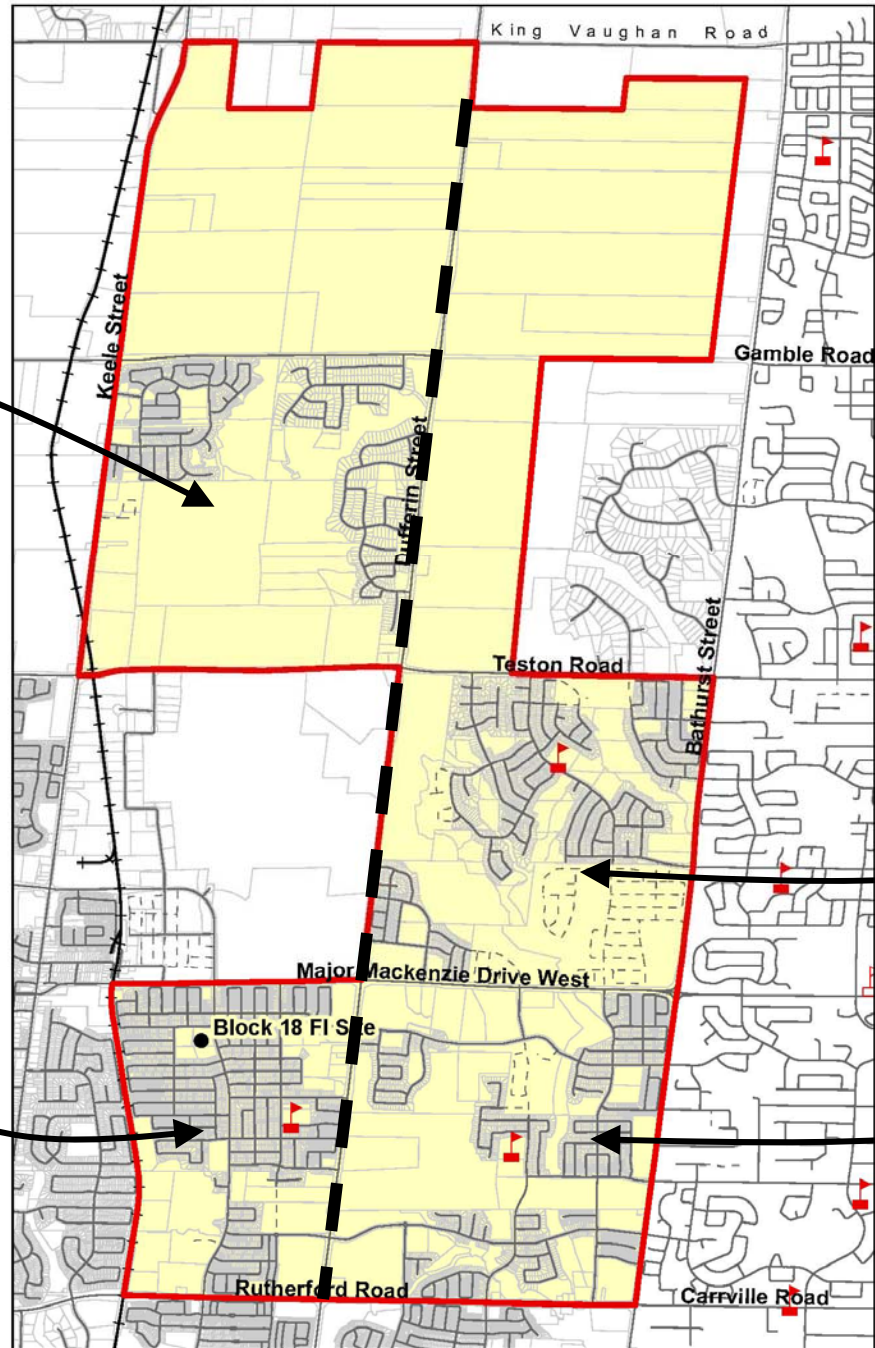
- Grade 1 FI classes will **not** be 'held' at Nellie McClung PS
- Grade 1 FI will be accommodated at either Ventura Park PS or Joseph A. Gibson PS according to your home school (map on next slide):
 - Ventura Park PS home schools: Herbert H. Carnegie PS **Section A & B only**, Nellie McClung PS, Anne Frank PS
 - Joseph A. Gibson PS home schools: Dr. Roberta Bondar PS, Herbert H. Carnegie PS **Section C only**

York Region District School Board

Block 18 (French Immersion), City of Vaughan

Holding at
Joseph A.
Gibson PS

Holding at
Ventura
Park PS



If Your Child is Registered for French Immersion

- Contingency French Immersion plan will be in effect for the entire 2014-15 school year
 - FI Students will **not** be moving to Nellie McClung PS once Anne Frank PS opens
 - No update will be provided
- In September 2015, students will move to the Unnamed Block 18 FI school opening south of Major Mackenzie Drive and west of Dufferin Street

Transportation

- Transportation staff are aware of all contingency plans
- Routes will be determined this summer and available on www.schoolbuscity.com the last week of August as per usual

Before & After Care

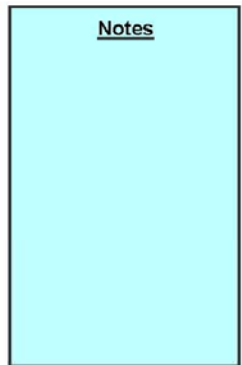
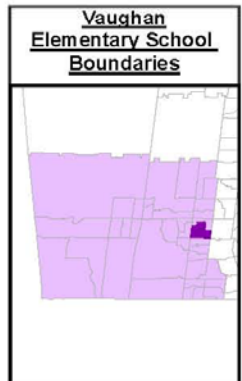
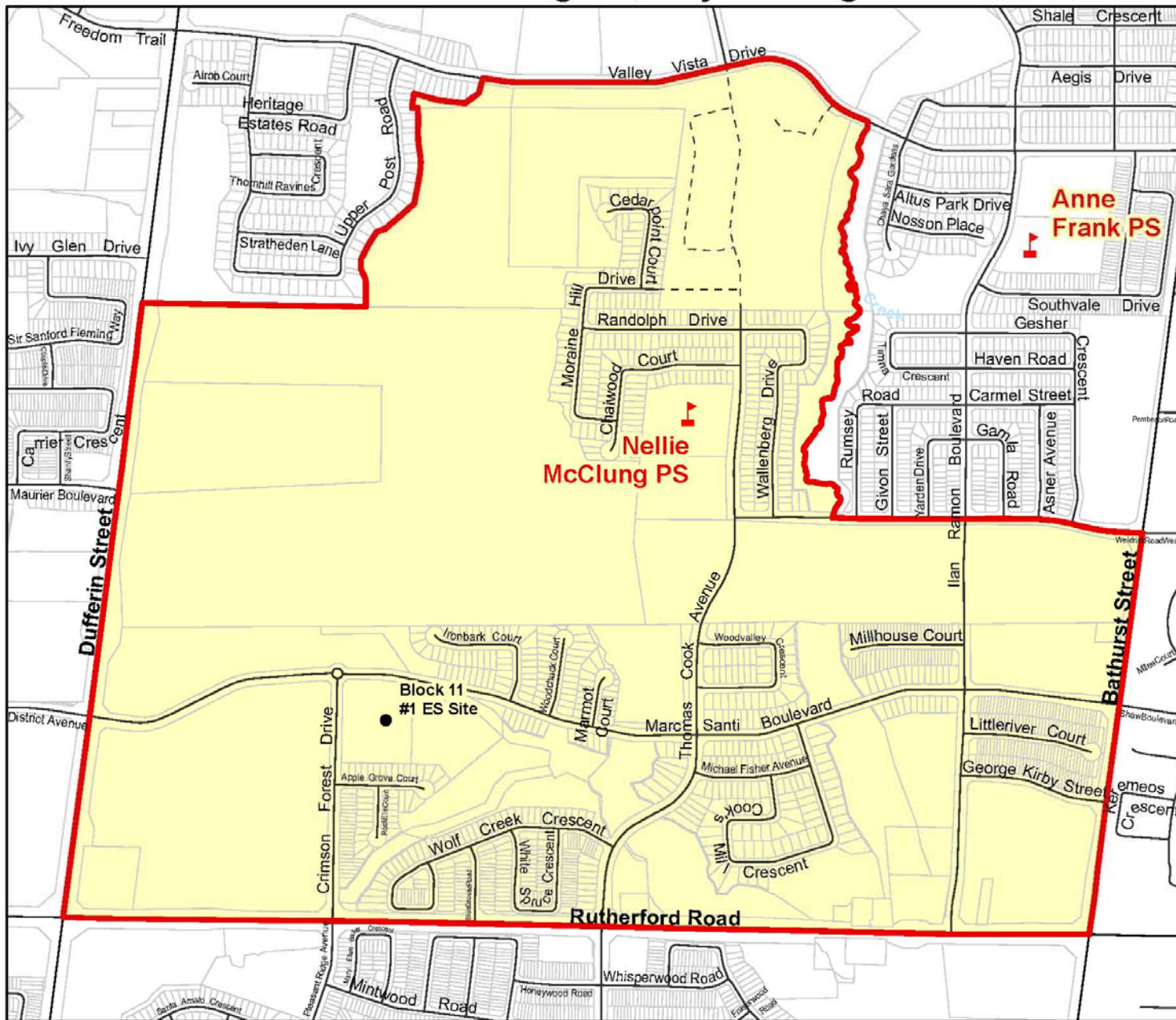
- Students will be transported to/from Nellie McClung PS to Forest Run PS for before and after care as they were in 2013-14

Contact Information

- Please ensure that the school where you registered has your current mailing address or email address
- French Immersion plan will proceed as outlined – no update will be provided
- Anne Frank PS contact Info
 - Website: <http://annefrank.ps.yrdsb.ca/>
 - Twitter: @afpsyr
 - Blog: <http://annefrankps.com>

Questions?

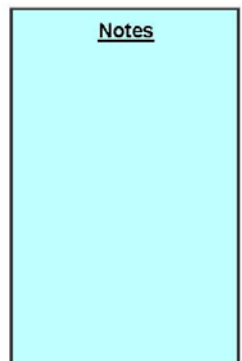
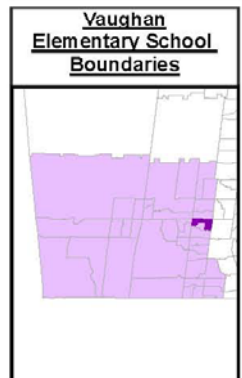
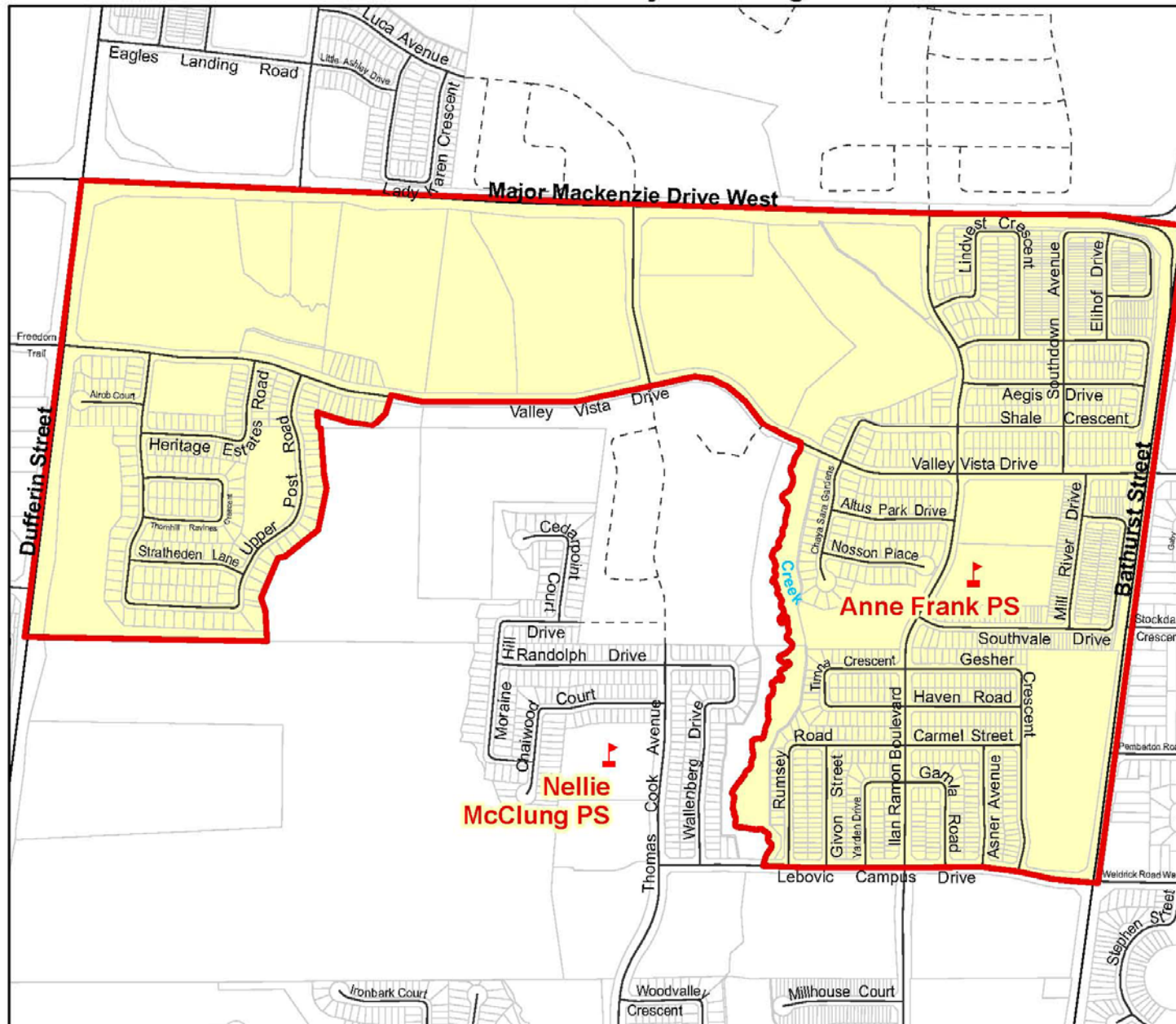
Nellie McClung PS, City of Vaughan



Boundary Approved:
Pending March 4, 2014
Map Updated:
November 2013



Anne Frank PS, City of Vaughan



Boundary Approved:
March 2014
Map Updated:
April 2014

