



ldayr • Learning Disabilities
Association of York Region

The right to learn, the power to achieve

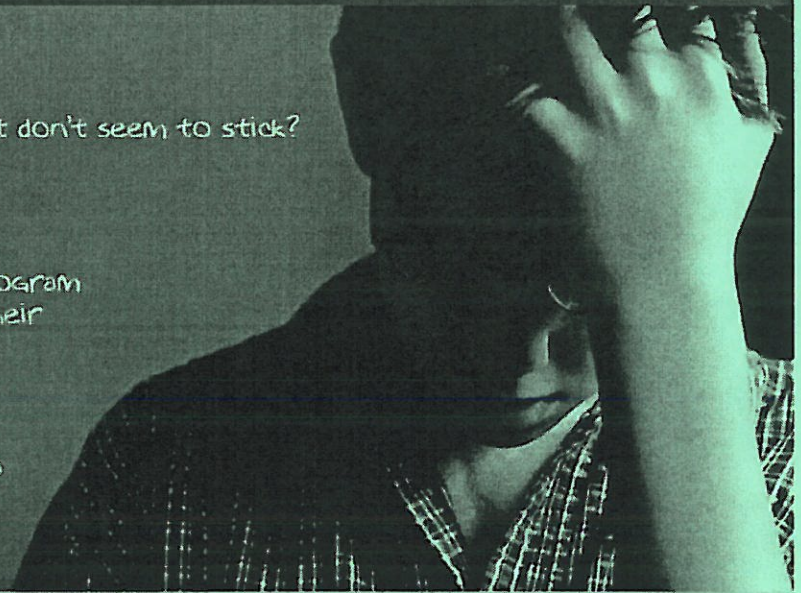
LDAYR AND EVOKE LEARNING PRESENT:

Tired of homework battles?
Discouraged trying to teach your child skills that don't seem to stick?

Study Space

A specialized supervised after school support program to help students in grades 4 - 12 strengthen their self-regulation and executive functioning.

We'll keep your child focused,
organized, and on track



Program Information:

4pm-6pm Monday - Thursday

Cost:

\$45 per day (2 hrs) + initial (1 hr) intake fee. Students are required to participate in the program a minimum of twice a week, for the two hour duration.

LDA-York Region
11181 Yonge St. (3rd Floor)
Richmond Hill, ON. L4S 1L2
(905) 884-7933 EXT. 23



ldayr • Learning Disabilities
Association of York Region

The right to learn, the power to achieve



United Way
York Region
Partner Agency



EVOKE
LEARNING
ACADEMIC COACHING SERVICES
www.evokelarning.ca

Program fees are transferable
but non-refundable.

About the Program

The Evoke Study Space program is designed to help students develop effective routines, complete homework and assignments on time, stay organized and on top of their work, plan ahead, lower feelings of anxiety, and become confident, active learners. Students learn to take on more responsibility for their learning and become more self-directed.

Skills

The program offers homework and assignment checks, assistance with creating daily and weekly plans for long-term projects, and guidance for allocating study time. Active study skills for tests and exams are outlined and taught. Academic Mentors help students prioritize and adjust their study schedule as necessary, work with them to address challenges as they arise, and show students how to break down assignments into manageable chunks with due dates. Students also receive support in organizing their materials, binders, book bags, backpacks, notes and handouts.

Structure

Mentors provide guidance, encouragement, and explanations as needed to help students complete their work and assignments. Snacks are provided or students may bring their own.

(NOTE: An additional Study Space program will take place in Evoke's Aurora office. Please note that our program is a nut free environment)

For more information, or to register your child, please contact:
Learning Disabilities Association of York Region: 905-884-7933 ext. 23
Evoke Learning: (www.evokelarning.ca)

Email: info@ldayr.org

www.ldayr.org



www.evokelarning.ca



Evoke Math Space

A weekend program to help students in grades 3-10 strengthen their math skills and receive additional academic support.

A weekend program to help students in grades 3-10 strengthen their math skills and receive additional academic support.

Designed to provide assistance with homework completion and creating a deeper understanding of what is being taught in class, the Evoke Math Space offers students additional weekend support to increase their math success and enhance achievement.

Each week, in a small group setting, students will have the opportunity to receive individualized assistance in identifying their learning gaps, getting clear on math concepts, and developing a deeper understanding of math class material.

**November 1, 2013 to February 2, 2014
and
February 7, 2014 to June 22, 2014**

Math Space Schedule:
Friday: All grades 4:30-6:30pm
Saturday and Sunday:
Grades 3-6 10am-12pm,
Grades 7-10 12:30pm-2:30pm

Locations:
1407 Yonge Street, Suite 206, Toronto, ON
15224 Yonge Street, Suite 202, Aurora, ON

Cost: \$45 per 2hr session
(Initial intake session is required)

The Evoke Math Space benefits all learners. Our math tutors work with students to access the curriculum through the use of technology, individualized strategies, and online tools and resources.

The Evoke Math Space is beneficial for students who are

- * struggling with math concepts currently taught in class
- * having difficulty completing homework on their own
- * struggling to manage their time effectively
- * want to familiarize themselves with upcoming units
- * missing periods of class, and are looking to fill in learning gaps
- * preparing for upcoming tests or exams
- * finding the curriculum too fast paced and need assistance keeping up
- * exceptional learners

The student - teacher ratio will not exceed 6:1 for this program. Students are expected to commit for one academic semester.

Email **Denise** (denise@evokelarning.ca) or call (905) 853 - 7283 for York Region services

Email **Kate** (kate@evokelarning.ca) or call (416) 516 - 3379 for Toronto Region services