

David Suzuki
Public School
45 Riverwalk Drive
Markham, L6B 0L9
905-209-0435



Principal
Yvonne West
Vice-Principal
Shelley Anand

Admin Assistant
Linda Smithson

Secretary
Gail Koidis
Denise Sumi

Superintendent
Dr. Lisa Walsh

Trustee
Jaunita Nathan

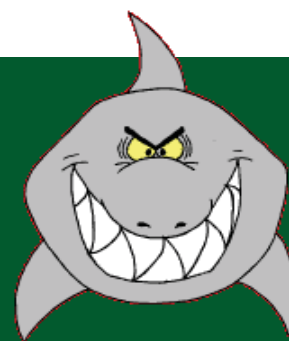


SUZUKI SOURCE

Volume 5

davidsuzuki.ps.yrdsb.edu.on.ca

January 2014



Administrators' Message

Welcome back and Happy New Year to all of our families! We hope that you had a wonderful holiday filled with the love of family and friends!



The start of this New Year at David Suzuki is also the start of a new Administrative Team. Many of you already know the Vice-Principal, Mrs. Anand as she has been here since September. I am pleased to be joining her to serve as Principal at this wonderful school and, Mrs. Anand and I, along with the entire David Suzuki staff, will work hard to ensure that David Suzuki Public School continues to be "a great place to be"!

We look forward to the next six months of this school year as we continue to work with your children, helping them to achieve their full potential. Our job is to help your children become the best they can be – the best learners and the best citizens. We know that we cannot accomplish this without your support and so we look forward to working with you in pursuit of this goal.

Finally, please know that we encourage you to come to us with your questions and concerns; your voice is important and your opinions are valued. Our doors are always open to you, should you wish to meet with either one of us, and, if more convenient for you, we are also accessible by telephone (905-209-0435) or e-mail (yvonne.west@yrdsb.edu.on.ca and shelley.anand@yrdsb.edu.on.ca).

Yvonne West, Principal

Shelley Anand, Vice Principal

January's Character Trait: Optimism

We maintain a positive attitude. We look on the brighter side of situations. We are able to see opportunities even in the face of adversity. We have hope for the future.

David Suzuki is a great place to be because Character Counts!



Safety and Security

The safety and security of students and staff is an ongoing priority at David Suzuki.

Earlier this year, the Board received funding from the Government of Ontario to enhance front door security in elementary schools by locking doors.

Over the past few months, the Board has been equipping all elementary schools with front door cameras, monitors, intercoms and buzzer locking systems.

Beginning Monday, February 3, 2014, elementary school doors will be locked 15 minutes after the school bell rings and will remain locked for the remainder of the school day. Visitors, including parents/guardians, couriers, maintenance staff, etc., will be required to use the buzzer at the front door and to sign in at the main office.

Our school continues to be a safe place where parent and community member involvement is welcomed and encouraged. This additional step will enhance the measures we already have in place, and ensure that all visitors sign in at the main office upon arrival.

- Visitors/Volunteers must enter by the front door and report to the office.
- Before the entry bells (9:00 a.m. and 1:55 p.m.), students may enter the front doors only if accompanied by a parent. Students should be joining their class at the appropriate entry door.
- Once morning anthem and announcements have started, students entering the building must come to the office where they will be issued a late slip. We ask that the students wait outside at the main office while announcements are being made.
- Parents should not go to their child's classroom unless they have made prior arrangements with the classroom teacher and signed in at the office.
- If it is necessary for students to be released early from class, parents should make the request at the office. Parents should not go to the classroom to request a student be released early.
- Parents/visitors who are dropping off lunches, homework or other items for students may bring these items to the office and attach a note with the child's name and grade.

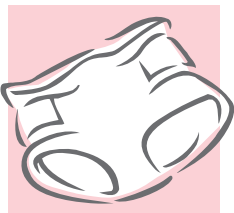
Parents should not make deliveries to classrooms.



Charity Drive

Thank you very much to the Suzuki community for your wonderful contributions to our charity drive for the Women's Centre of York Region. The response was overwhelming and will be greatly appreciated by the people who receive the items.

Thank you to our Student Council and Mrs. Randazzo, for all your help in collecting and delivering the donations. It was really appreciated!



Junior Kindergarten Registration

Starting on Friday, January 17, 2014, at 9:00 AM we will begin accepting registrations for September 2014. Registration forms are available on the Board's website: www.yrdsb.edu.on.ca.

Students eligible for Junior Kindergarten will have been **born in 2010**. Students currently in Junior Kindergarten do not have to re-register for Senior Kindergarten.

The **original** documentation that is required for registration is:

- Birth certificate or passport and landed immigrant papers
- Proof of residency (we only accept property tax bill, property tax assessment statement, mpac form, offer to purchase, or lease agreement)



French Immersion Information Sessions and Registrations

Information sessions for the French Immersion (FI) program will take place at Sam Chapman P.S. on January 16, 2014 at 7 p.m. **FI registration will begin January 17, 2014.** In order to streamline the registration process, parents or guardians of Senior Kindergarten students entering Grade 1 in September 2014, and wishing to enroll in the FI Program, can visit or call their home school office and request an *Office Index Card - short version*. **The Office Index Card must be signed by the principal of the home school.** Parents or guardians then **take this form, along with one piece of identification showing their address to Sam Chapman P.S. to register between January 17 and February 14, 2014.** This eliminates the need to provide duplicate enrollment information or to pre-register.

YRDSB's FI Accommodation Plan provides long-term consistency and equity of access to all students in York Region and will enable YRDSB to continue to offer the FI program to all who wish to enroll. The FI program will be offered in Dual Track or Single Track settings, in a variety of configurations. In order to meet community needs and optimize available space in our schools, a community's Grade 1-8 FI program may be provided over more than one school during the course of a student's FI education. This will allow flexibility in addressing community needs and the opportunity to use existing space in schools. More information is available on the Board's website: www.yrdsb.edu.on.ca. Please note: Some of the FI accommodation plans will require facility modifications or the development of new schools and will require short-term transition plans that might include overflow while we work toward the long-term vision. Overflow refers to situations in which the Board directs students to attend a school other than their community school or optional program for a specific period of time, as defined in Policy #108.

MILK UPDATE

The milk program will be returning for Term 2, from Feb. 3rd to June 25th, 2014. Families must prepay for term 2 milk orders. The last day to send your order in is January 20th, 2014. This is a FIRM deadline.

If you are available to volunteer for half an hour a few days a week to support the milk program we would appreciate it. Please speak to the office if you are interested. We need the support from our community in order to continue to run the milk program smoothly.



PIZZA LUNCHES

For families who have NOT ordered pizza for the 2013/2014 school year, we are pleased to offer Friday pizza lunches. Students will have a choice of either pepperoni or cheese slices. The deadline to place your orders is January 16th.

HELP PREVENT HEAD LICE!



Each year cases of pediculosis (head lice) are found throughout our schools. In an effort to reduce the numbers of cases found and decrease the inconvenience to parents/guardians and students, the York Region District School Board requests your assistance. As your child is now returning to school after a long holiday, please inspect his/her hair and scalp for pediculosis. Periodic inspections during the year will help prevent the spread of head lice.

Head lice are tiny (1/8" or 3mm long) wingless insects with flattened bodies. They cling to the hair by means of six legs. They live mostly behind the ears and at the nape of the neck. The female lays tiny, yellowish-white eggs called nits. They resemble dandruff but are attached to the hair by a cement-like material and are very difficult to remove. It is usually the eggs that are noticed first.

If head lice are found, do not return your child to school until treated. This will prevent the spread of pediculosis. Children are only allowed to reenter the class when all the nits are removed from the hair.

For more information, please call the Public Health Nurses at York Region Health Services *Health Connection* line, 1-800-363-5653, Monday to Friday, 8:30 a.m. – 4:30pm



Inclement Weather



SCHOOL BUS CANCELLATION NOTICE DUE TO INCLEMENT WEATHER

School bus service may be cancelled from time to time due to inclement weather and/or poor road conditions. In these cases, parents and students should develop alternate care/transportation arrangements. Since busing schedules begin by 7:00 a.m. or earlier, all cancellation decisions must be made by 6:00 a.m. to ensure the safety of our students. Cancellation decisions are made by the Board and will only be made after thorough consultation with school bus companies servicing York Region.

Please note: If buses are cancelled in the morning, they will not operate in the afternoon. Therefore students transported to school by parents in the morning will need to be picked up by parents at the end of the school day..

Parents, students and school staff are asked to access the following radio and television stations after 6:00 a.m. to receive bus cancellation information:

RADIO AM Stations - 590, 640, 680, 860, 1010, 1050, 102.1, 1540, 1580,

FM Stations - 88.5, 89.9, 92.5, 93.1, 94.1, 94.9, 95.9, 97.3, 98.1, 99.1, 99.9, 101.1, 104.5, 100.7, 107.1

TELEVISION CITY TV, THE A-CHANNEL, CFTO TV, THE WEATHER NETWORK, GLOBAL

A bus cancellation message will also be available at www.schoolbuscity.com and by calling 1-877-330-3001.



Attention Grade 8 Parents/Guardians!

It is that time of year again...**option sheets** for **grade 9!**

Our current grade 8 students need to start thinking about what courses to select for high school and what level of course is best suited for their learning. Please take some time with your child to communicate and explore through the following website:

www.yrdsb.edu.on.ca/guidance.services

Each student has already received their user name and password for log in purposes.

Here are a few important dates to note:

- Registration Forms (paper copy) are due to Ms. Benson or Mr. Lowrie by **Thursday, January 16**
- Transfer requests for other YRDSB schools, **Friday January 31st.**
- Online Course Selections must be submitted by **Friday, February 10** (students must also print a paper copy of their course selections and submit them to Ms. Benson or Mr. Lowrie)

SCHOOL PARKING LOT AND TRAFFIC FLOW

The City of Markham has recently issued tickets to the owners of some vehicles parked at our school. Please be advised that the City is able to ticket for the following violations:

Idling

Parking in a fire route

Not physically being inside the car at a kiss and ride area

Parking in a bus route

Obstructing a fire hydrant

Parking in a designated handicapped space without a permit



We ask that you take care in abiding by the traffic by-laws, as we do not know when the City of Markham may be making visits to our school. As well, the fines can be quite high and unfortunately, the school has no ability to override a ticket if it has been issued by the City.

Kiss and Ride

Parents familiar with morning traffic know just how congested it can be in the morning in front of the school and in the drop off loop in the parking lot. We strongly encourage students to walk to school. However, if you must use the loop in the morning, **please do not leave the car or wait in the loop at any time.**

There are two lanes of traffic in the loop. The lane closest to the sidewalk is for the purpose of drop off. The outside lane is an exit lane to be merged into after dropping off your child.

Children should not be exiting the vehicle on the driver's side between the two lanes of traffic as this is very dangerous. Your child should be exiting in the lane closest to the school and exiting out the passenger side of the vehicle so that he/she is stepping on to the sidewalk. Once dropped off, students should proceed directly to the schoolyard or Kindergarten fenced area. If you wish to park and walk your child to the schoolyard, **please park on a side street as there are only enough parking spaces for our staff to park.**

Please do not park in the Kiss and Ride Loop, this is for dropping off only.

What To Do With Old Electronics?

Did you get or give new electronic toys over the holiday? Are you going to throw out your old electronics? Don't put it in the trash!!!

All electronic waste can be dropped off at the **York Region Household Hazardous Waste Depot**.

Here is what they will accept

- Televisions (limit of 2), Radios and Stereos (without speakers), Video Game Consoles, VCR's
- Computers and computer accessories (limit of 4), Electronic Games
- Scanners, Printers, Modems, Digital Cameras
- Telephones (mobile/cellular & "Hardwire"), Electronic Pagers, Fax Machines
- CDs & DVDs

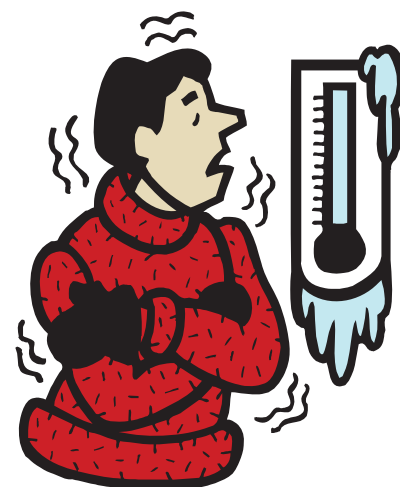


Household Hazardous Waste Depot



Cold Weather and Indoor Recesses

With the arrival of the cold weather, it is imperative that you send your child to school dressed appropriately. This includes remaining outside for 30 minutes at morning recess and 40 minutes at lunch recess. With severe weather conditions, reduced outdoor recesses or indoor recesses may take place. This decision is made on a day by day basis and would typically occur at about the -20°C mark (with wind chill). Please ensure that your child(ren) come to school with extra clothes as it is easier to take off a layer if they get too hot than it is to put on a layer they may not have if they get too cold. Also, please pack extra socks and pants so your child will have something to change into if they should happen to get wet.





“Light” – Incorporating Dramatic Arts in Literacy Instruction

For the learners in Mrs. Scott’s Grade Seven class, the classroom became a theatre during the month of December. The students were active participants in “in bringing a poem to life” through the use of spoken verse, music, and dance. Additionally, a backdrop and audience area, were constructed within the classroom environment. By assuming roles of backstage, actor, lighting, and sound, the students then carried out performances and invited other classes within the school to be audience members. Communicated in their presentation was a very important message:

Many cultures; many countries

Unite

In their quest for light!

Curriculum Corner

It is important that we continue to work together to support student achievement. Your child is growing up exposed to many different forms of texts in our media rich world. It is important that you help foster critical thinking skills with your child so that he/she can understand different perspectives, question the author’s message and understand how language can be used to persuade people.



As your child reads different texts, provide opportunities for him/her to talk about what they have read. Some questions that you can ask your child are:

- *What was the text about? Why did you choose to read it?
- *What was the message or big idea that was presented?
- *What might the author want you to think? How do you know?
- *Do you agree with the author’s point of view? Why or why not?
- *How did you feel as you read the text? Why?
- *How were words or images to communicate the author’s message?

Snowballs



In order to promote a safe and respectful environment on our school playground, students have been told that the throwing of snowballs is prohibited. Students are aware that snowballs may contain pieces of ice and rock and that they can cause injury to others or damage school property. Student safety is a priority at David Suzuki. Parents are asked to discuss the importance of keeping the snow on the ground and to remind students of our safe schools policy.

Reporting Your Child's Absence

You **MUST** call in your child's absence! We have a 24 hour absence reporting line, clearly state and SPELL your child's name and state their teacher's name as well. If we do not know where your child is we must call the police.

When calling in please indicate whether the absence is an illness, a medical appointment, an injury, Religious Holiday or a parent withdrawal (a day off). If it is an illness please indicate the following:

- Has a fever
- Stomach and intestinal symptoms (vomiting or diarrhea)
- Respiratory breathing cold symptoms (coughing, sneezing and congestion)

Thank you for your cooperation.



Cold and Flu Prevention

Please have a discussion with your child about how to best prevent the spread of cold and flu viruses.

Students need to wash their

hands frequently throughout the day, particularly if they are coughing and sneezing in their hands. They should cough or sneeze into a tissue if they have one. If not, they should cough or sneeze into their sleeve. Remind your child(ren) not to share food or water bottles. Also, they should avoid sharing musical instruments unless they have sterilized the mouthpiece. If your child is not well, please keep her or him at home so as to help prevent the spread of flu and viruses.



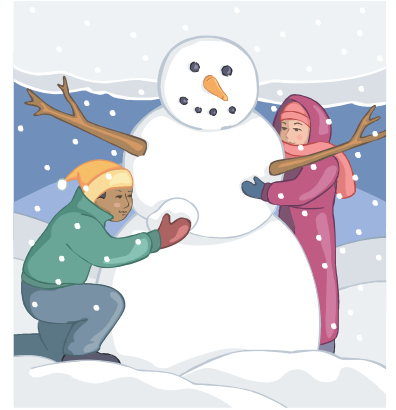
Are you too sick to go outside at Recess?

Thank you to everyone who follows our school rule that states that if you are too sick to go out for recess, you are too sick to attend school. Please note that supervision is not available for students to remain in classrooms nor at the office during recess times if they are ill. If your child attends school, he or she will be expected to go outside at both morning and lunch recess.



Winter is Here

Just another reminder that it is very important that students dress appropriately for the cold winter weather. Students should be bundled up! All children should wear boots, socks, snow pants, coats, hats and mittens/gloves.



With over 730 students in the school, please remember to label all your child's outdoor clothing with his/her name as many children have items that are the same.

Students should also have a pair of indoor shoes for use within the school.

UPCOMING DATES

Jan. 13	6:30 School Council Meeting
Jan. 17	Junior Kindergarten registration begins at 9:00 am, P.A. Day (no school for students)
Feb. 13	Reports Cards go home

Phone Number Changes

Just a reminder that if you have any changes in your home, work or cell phone numbers, please let the office know so we can update our records. We want to ensure that we are able to reach you in case of any emergencies.

Thank you.

Environmental Corner



This is just a reminder that we are collecting ink cartridges, cell phones and batteries to recycle. If you have any at your home or business, please send them to the school. We have boxes set up in the front hall of the school to collect these items.

Thank you for your support.