

289 Risebrough Circuit
Markham, Ontario
L3R 3J3
T: 905.475.8143
F: 905.475.3264

Principal: Nandy Palmer
Vice-P.: Padmini Padiachy
Superintendent: Erik Khilji



Website: www.milliken.millsps.yrdsb.edu.on.ca
Email: milliken.mills.ps@yrdsb.edu.on.ca
Twitter: @MillikenMillsPS

Milliken Mills PS
January 2017

A Message From the Administrative Team

Dear Families,

We would like to extend our most sincere wishes to all our families for a healthy, happy and prosperous New Year! The staff would also like to thank all of the parents and students who sent best wishes for the holidays. We truly appreciate all the kind words, thoughtful cards and generous gifts. The Milliken community is wonderful, and it continues to be our pleasure to serve our students and their families.

As we move into another year, we have much to look forward. Our staff members are involved in a variety of on-going professional activities - from planning classroom activities, to examining student data from ongoing assessments and evaluations and setting goals for our School Improvement Plan for Student Achievement, to arranging exciting opportunities for our students for the remainder of the school year. Our students continue to be involved in all aspects of school life—be it assisting with fundraising efforts, athletic events, spirit days etc. We are constantly discussing new and innovative ways of involving our students in all facets of school life.

As we move into a time during which many people make resolutions, we are asking you to please help us to reduce the number of students arriving late to school. Please note that teachers are on duty at 8:05 a.m., students are allowed to enter the building at 8:15 a.m., and students need to be **in their classrooms ready to learn by 8:20 a.m.** We continue to have many students arrive late, and we thank you for helping us in this area.

Yours in education,
Nandy Palmer & Padmini Padiachy



French Immersion Registration

Information sessions for the French Immersion (FI) program will take place at Coppard Glen PS on January 19, 2017 at 7 p.m. Please visit YRDSB's website in January 2017 (<http://www.yrdsb.ca/Programs/fi/Pages/Program-Locations.aspx>) to find the FI program location for your elementary school location. FI registration will begin January 20, 2017. Parents or guardians of Senior Kindergarten students entering Grade 1 in 2017, and wishing to enroll in the FI Program, can visit or call the school office and request an *Office Index Card - short version*. The Office Index Card must be signed by the principal of the home school. Parents or guardians then take this form, along with one piece of identification showing their address to the designated FI program location to register between January 20 and February 10, 2017. This eliminates the need to provide duplicate enrollment information or to pre-register.



Kindergarten Registration

Kindergarten registration will commence on January 20, 2017 for the 2017-18 school year. Registration forms are available on YRDSB's website: www.yrdsb.ca. Children who turn four or five years old during 2017, live within the school boundary and whose parents are public school tax supporters will be eligible to register for kindergarten. A kindergarten information session for parents is being planned for this spring. For more information please visit the YRDSB website.




HOW TO FOSTER A GROWTH MINDSET IN YOUR CHILD

Schools and teachers across the world have embraced Carol Dweck's theory of growth mindset in the hope of helping students to fulfill their potential. Popular strategies include tweaking the way teachers give feedback, encouraging self-reflection through questioning, engaging parents, and, crucially, praising processes instead of natural ability.



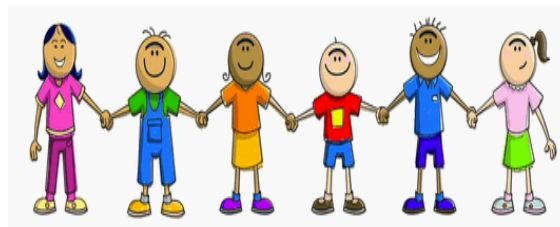
Engage parents

A paper published last year found “no clear link” between a parent's mindset and their child's. What did make a difference, however, was how parents reacted to setbacks.

The researchers noted that “it may be that parents, like children, have mindsets that shape their own goals and behaviours, but that these beliefs are relevant to shaping children's beliefs only if they lead to practices that children pick up on”. It is hard to accurately guess someone's beliefs; actions can be more easily interpreted. 

They note that an intervention targeting parents' mindsets could be used to teach them how failure can be beneficial, and how to react to their children's setbacks in a way that encourages motivation and learning.

Research continues to suggest that teachers' and parents' mindsets and beliefs influence their interactions with children, which in turn influences student motivation and self-expectation.



School Bus Transportation Companies

If your child's bus is late in arriving to your stop, please contact the numbers listed below. Please save the number for your child's bus in your cell phone. We hope this will help to alleviate worry in times when the bus is late in arriving to your stop. For information on bus routes, stop locations, times, late arrivals, cancellation, eligibility, registering a complaint, safety and general information, please visit www.schoolbuscity.com or contact the York Region Student Transportation Services School Bus Information Line at 1-877-330-3001, accessible 24 hours a day.



<u>Bus Company</u>	<u>Phone Number</u>
Stock Transportation	905-294-5104
First Student	905-888-1938



STS School Vehicle Cancellation Procedure

School bus service may be cancelled from time to time due to inclement weather, extreme temperatures and/or poor road conditions. In these cases, parents and students should develop alternate care/transportation arrangements. Since some bussing schedules begin by 7:00 a.m. or earlier, all cancellation decisions must be made by 6:00 a.m. to ensure the safety of our students. Cancellation decisions will only be made after thorough consultation with school bus companies servicing York Region. Decisions are based on several factors including precipitation, air temperature and road conditions. You do not need to call the school to report absences due to inclement weather.

Please note the following: A decision to cancel school bus transportation may be system wide (where all buses in York Region are cancelled) or municipality specific (where buses in one or more municipalities are cancelled). If school bus transportation in your municipality is cancelled and your child attends school in a different municipality where service is operational, your child will not be transported to/from school. **If buses are cancelled in the morning, they will not operate in the afternoon. Therefore students transported to school by parents will require the transportation home.**

Parents, students and school staff are asked to access the following radio and television stations after 6:00 a.m. to receive bus cancellation information:

RADIO - 590 AM 640 AM 680 AM 860 AM 1010 AM 1050 AM 1540 AM 1580 AM 88.5 FM 89.9 FM 92.5 FM 93.1 FM 94.9 FM 95.9 FM 97.3 FM 98.1 FM 99.1 FM 99.9 FM 101.1 FM 102.1 FM 104.5 FM 100.7 FM 107.1 FM

A bus cancellation message will also be available at www.schoolbuscity.com and by calling 1-877-330-3001.

When buses have been cancelled and you drive your child to the school, please remember to be prompt picking up your child by 2:40p.m. (Typically on those days your travel time will be increased and the school will be closed at 3 p.m.). To avoid confusion the office will be unable to call down students to be signed out after 2:20p.m. Please make sure that your child is dressed appropriately to play outside. We want to make sure your child is prepared to have a good day. Thank you for your understanding and cooperation.

JANUARY



MARTIN

Sun Mon Tue Wed Thu Fri Sat

1	2	3	4	5	6	7
---	---	---	---	---	---	---



8	9	10	11	12	13	14
---	---	----	----	----	----	----



15	16	17	18	19	20	21
----	----	----	----	----	----	----


 FI INFO. NIGHT
 @ 7PM at
 Coppard Glen


 PA
 Day
 JK REGISTRATION


22	23	24	25	26	27	28
----	----	----	----	----	----	----

GR. 6 VIP PROGRAM

MMHS Course Selection Visit


 MMHS Course Selection Visit



29 30 31

 Upcoming School
 Council Meetings:
 February 6

Character Matters!
 January's Attribute is **Fairness**: We are sensitive to the needs of each individual. We treat each other as we wish to be treated ourselves. We interact with others without stereotyping, prejudice or discrimination. We stand up for human rights.