

COMMUNITY RESOURCE FACILITATORS

East

Yasmin Mawani 905-940-7800 ext. 238
yasmin.mawani@yrdsb.edu.on.ca

Central

Yvonne Kelly 905-884-4477 ext. 345
yvonne.kelly@yrdsb.edu.on.ca

West

Oksana Majaski 905-738-5497, ext. 213
oksana.majaski@yrdsb.edu.on.ca

North

Jennifer Gillespie 905-895-5155 ext. 124
jennifer.gillespie@yrdsb.edu.on.ca

Performance Plus

Linda Aihoshi, Program Facilitator
905-884-2046 ext. 241
linda.aihoshi@yrdsb.edu.on.ca

Pauline Costello North Schools
905-895-5155 ext. 144
pauline.costello@yrdsb.edu.on.ca

Patti O'Sullivan East/West Schools
905-940-7800 ext. 129
patti.osullivan@yrdsb.edu.on.ca

Administration

Camille Logan

Principal,
Inclusive School and Community Services
905-884-2046, 1-877-280-8180 ext. 238
camille.logan@yrdsb.edu.on.ca

Joan Lachhman

Administrative Assistant
905-884-2046, 1-877-280-8180 ext. 252
joan.lachhman@yrdsb.edu.on.ca

Goals

As part of the York Region District School Board, ISCS will work collaboratively to:

- support schools to become more equitable, inclusive and transparent as they work to champion the achievement and well-being of ALL students;
- develop resilient students who are engaged in their learning and who feel a sense of belonging in their school communities;
- engage families and communities as supportive educational partners who enrich our schools as places of learning and growing for their children;

ISCS will achieve these goals by:

- framing its work by the strengths and assets that students, families and communities offer;
- working with schools to build equitable and inclusive learning communities that foster student achievement and well-being;
- working with students to support developing resilient learners whose diversity serves to enrich our schools;
- working with parents, families and communities to build supportive partnerships that promote student achievement and well-being.

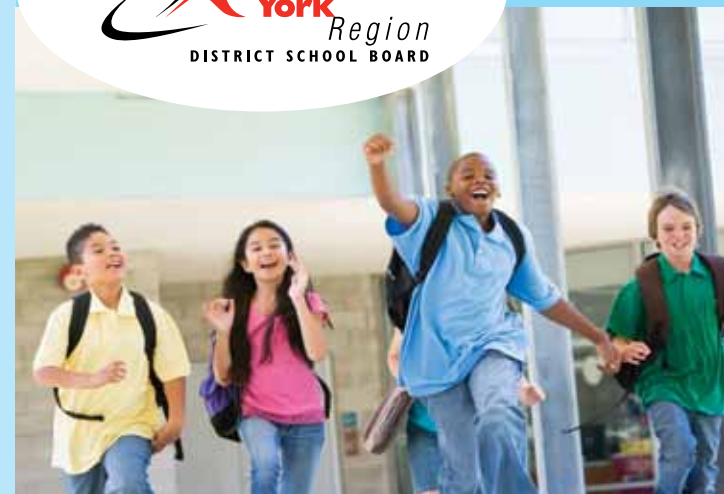
Dr. Bette Stephenson Centre for Learning

36 Regatta Avenue, Richmond Hill, ON
L4E 4R1

P 905.884.2046
F 905.773.2406
yrdsb.edu.on.ca
LDD000178a



INCLUSIVE SCHOOL AND COMMUNITY SERVICES



COMMUNITY RESOURCE FACILITATORS

DIVERSITY

is our STRENGTH

EQUITY

is our COMMITMENT

INCLUSION

is our GOAL

How do we Support schools?

Each team provides specific supports and services

for schools, students, staff, parents and/or community members. These resources help to ensure the Board is providing excellence in education by delivering equitable and inclusive education practices.

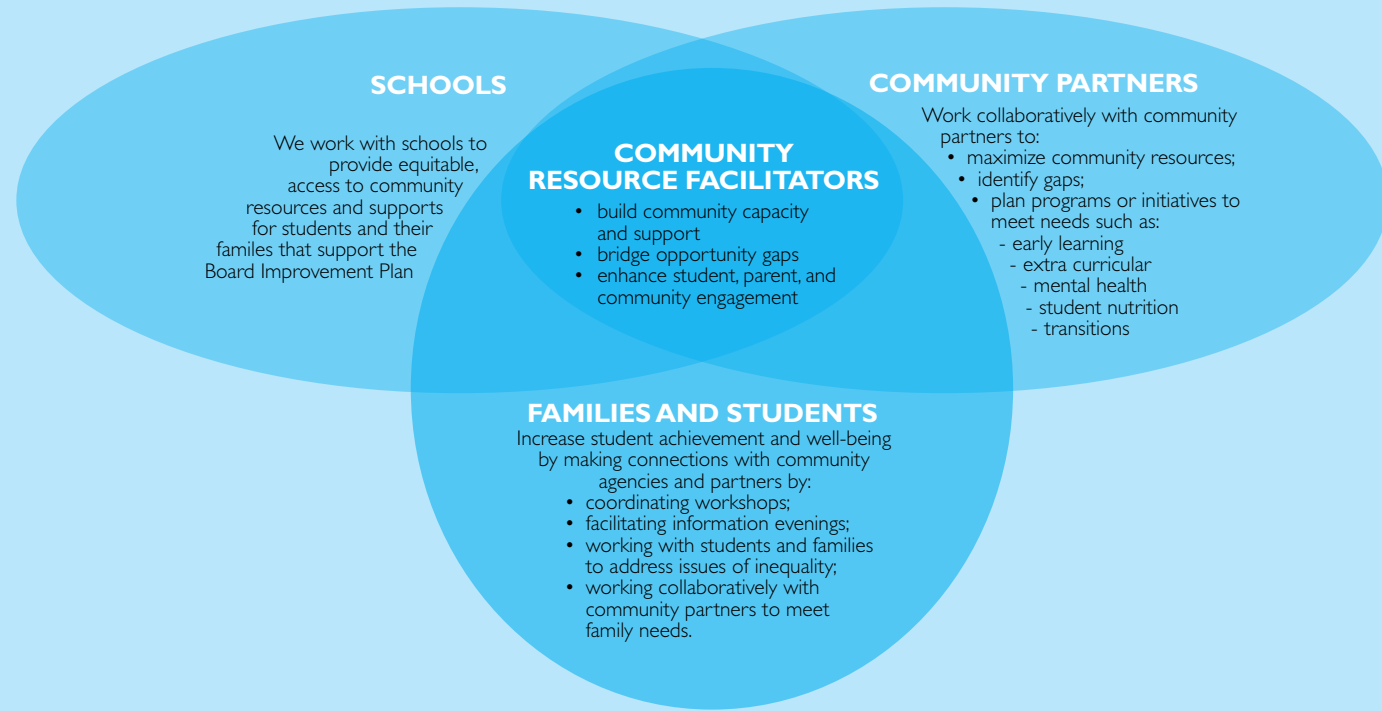


COMMUNITY RESOURCE FACILITATOR

"We respond to the emerging needs of school communities by collaborating with community partners to maximize resources and enhance opportunities for parent engagement, student achievement and resiliency (well-being)."

The Community Resource Facilitator team provides strategic support for school administrators, staff and parents so that needs identified by the school can be aligned with the most appropriate community resources, supports and programs.

CRFs participate on regional committees with many community partners to ensure that all schools throughout YRDSB have access to the supports, resources and programs that are generated by regional, collaborative work.



DIVERSITY
is our STRENGTH

EQUITY
is our COMMITMENT

INCLUSION
is our GOAL