

Everything you need to know about accessibility and other essential resources across all 44 publicly funded Ontario post-secondary schools.

The **Transition Resource Guide** (available online at www.transitionresourceguide.ca) is a one-stop shop for students with disabilities to learn what they need to know to be prepared for post-secondary school in Ontario. Students can find information about their rights and responsibilities, how to access accommodations at post-secondary, as well as detailed information about each publicly funded post-secondary institution in Ontario. While the TRG contains a wealth of resources for students with disabilities, it is beneficial for **all** students making the transition to post-secondary.

RESOURCES

The **Resources** section provides information that is general to all publicly funded colleges and universities in Ontario. Students can use this information to learn about what to expect at post-secondary and how disabilities are accommodated.

Highlights from this section include:

- Regulations that govern special education at post-secondary
- Pros and cons of disclosure
- How to register with the Accessibility Services
- Documentation requirements for different disabilities
- Financial information, including the Bursary for Students with Disabilities
- Disability support services available, including transition programs and learning strategists
- Checklists to review and compare schools and services



This guide has been created by the **Regional Assessment and Resource Centre (RARC)** at Queen's University, with support from the Ministry of Training, Colleges and Universities. The guide is available online at www.transitionresourceguide.ca.

COLLEGES AND UNIVERSITIES

The **Colleges** and **Universities** sections provide detailed information about publicly funded colleges and universities in Ontario. Students can find specific information about the resources available at each school and how to access them.



Highlights from this section include:

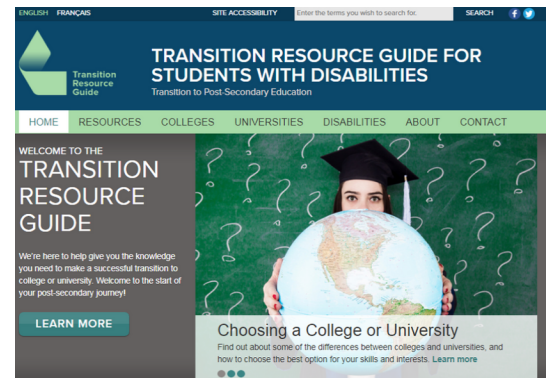
- Proper name and website of Accessibility Services at each school, including how to register and documentation requirements
- A listing of general and disability specific services available
- Residence, campus, and transit accessibility
- Contact information for all offices and services described
- Checklists to summarize the school's services, and how they meet one's needs

DISABILITIES

The **Disabilities** section provides information about specific disabilities, such as Learning Disabilities, ADHD, Autism Spectrum Disorder and mental health disorders, and their impact in the post-secondary setting.

Highlights from this section include:

- Common concerns and struggles of students with the disability
- Possible academic accommodations and support services
- A listing of community support services



ABOUT THE REGIONAL ASSESSMENT AND RESOURCE CENTRE



The Regional Assessment and Resource Centre (RARC) at Queen's University provides comprehensive assessment services for college and university students with learning disabilities, ADHD, and ASD. In addition to assessment services, training, and research, RARC provides outreach programs for students with disabilities. RARC has created the Transition Resource Guide and runs 3 transition programs (STEPS, OLTS & STOMP). RARC is funded by the Ministry of Training, Colleges and Universities.



For information about the Transition Resource Guide or RARC, please visit www.transitionresourceguide.ca and www.queensu.ca/rarc, or contact the support team at transitionresourceguide@queensu.ca