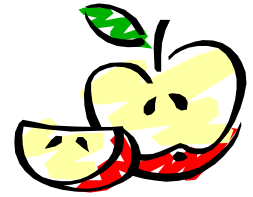


Red Maple News

October 2018



Red Maple Public School (905) 771-6157

Website: <http://www.redmaple.ps.yrdsb.ca/>

Email address: red.maple.ps@yrdsb.ca

Principal : Ms. Sherry Zarif

Vice-Principal: Mr. Lorne Boyle

Superintendent: Michael Cohen Trustee: Carol Chan

Administrator's Message

The months of September and October have certainly been busy at school. Students have settled into their classes and the rich, challenging work of the school year has begun. The students are busy learning in classrooms, engaging in math, drama, language, science, physical education, social studies, geography, history, art, French, music and more! Staff are busy co-planning in grade teams, working together to set routines and supports for students. The learning doesn't stop inside of the classroom as students are also learning at recess the important skills of making friends, socializing, sharing, problem solving, and playing together with others. When we walk the halls or the tarmac and field outside, it is wonderful to see their smiling faces and feel the incredible school spirit that we have at Red Maple!

We extend our thanks to the wonderful staff for the many extra-curricular activities that are already in place for the students: cross country, Intermediate volleyball, student leadership groups (Me to We Club, Well Being Team, announcement crew, kindergarten helpers, door/hallway monitors, office helpers and library helpers) and so much more! Thank you to our amazing office staff for organizing our Snack Program and to our Parent Council members for organizing the hot lunch programs (Pizza Day) and preparing for our Meet the Teacher Barbecue on October 11th. We also thank parents for your ongoing support. As always, we welcome your input as we develop goals, set priorities, and establish expectations aimed at enhancing student achievement. We are delighted to be part of an exceptional school community and are committed to making Red Maple an even better place for the children and families we serve.

If you have any questions concerning your child or specific programming concerns, please feel free to contact the school.

Thank you for your ongoing support,

Sherry Zarif, Principal

Lorne Boyle, Vice Principal

Punctuality is Important

Punctuality is a life-skill that is valued by schools, employers in the work-force, and society. The bell rings at 8:25 a.m. at Red Maple and classes begin at 8:30 a.m. Students are expected to be in class by the second bell and if not, will be considered late and will be recorded as such. Please respect your child's precious learning time by scheduling appointments before and after school hours. Arriving late or leaving early affects your child's learning and it is also disruptive for the class.



Help your child start each school day ready to learn!

The Protection of Anaphylactic Students

The York Region District School Board has a comprehensive policy to help protect students with life threatening allergies. Protecting anaphylactic students from exposure to life threatening substances creates a major challenge to all elementary schools.

As outlined in the policy, parents are asked to inform the school of such allergies immediately and are required to fill in specific forms which are available in the office. Parents are also asked to ensure that students for whom Epi-Pens are prescribed, have two Epi-Pens at school. **It is recommended that one Epi-Pen be worn by the student in a fanny pack at all times, which includes on the bus, on excursions, and on all other school related activities/ sports. The other Epi-Pen must be stored in the school office for emergency use only. This Epi-Pen will also be taken on trips.**

At Red Maple:

- We will continue with our “nut safe” school environment via food restrictions. Students will be informed of and reminded that they are not to share food. The school environment includes entire school grounds, buses and other modes of transportation, school trips, before/after school/weekend programs, and school sanctioned events involving pupils;
- We will prohibit food outdoors to minimize exposure to insects (i.e. wasps, etc.);
- We will continue to communicate regularly to the entire school community that we are a “nut safe” school via newsletters, and posting of “nut safe” signs throughout the school;
- We will take special precautions around holidays and special celebrations, by planning activities that ensure the health and safety of our students. No cakes, cupcakes, muffins, donuts, and the like, will be allowed in the school for birthday recognition purposes. However, non-edible items will be permitted;
- Special communication and instructions will be given to individual classrooms where students with allergies are enrolled regarding allergens in that particular classroom;
- We will continue to ensure that all products sold through the school for fundraising or other purposes are nut free;
- We will continue to ensure that permit holders, visitors and all school staff are aware of these precautions.

We ask that NO PRODUCTS be brought into the school that may contain nut products such as peanut butter, Nutella, certain types of candy bars, cookies, etc. Fresh vegetables, fruit, “no nut” granola bars, raisins, etc., make great snacks for your child and do not pose health risks. We ask that you avoid dropping off lunches from fast food restaurants such as McDonald’s and Tim Hortons that sell products containing nuts.

As well, letters have been sent home to parents of students in specific classrooms regarding other allergies in the classroom, such as fish, kiwi, shell fish. PLEASE ensure that if you received such a letter, to abide by this specific request for that specific classroom

EQAO UPDATE

The EQAO (Education, Quality and Accountability Office) is an annual assessment which takes place each May. It measures each students' knowledge and skills in reading, writing and mathematics. Students are required to do much more than memorize and recite facts. They work independently to solve problems, write responses and answer multiple choice questions; they read and respond to a variety of materials, and write for different purposes and audiences; they solve mathematical problems and explain their answers, and they apply their knowledge and skill to real-world problems and tasks.

The purpose of the EQAO assessment is to provide information that parents, teachers and policy makers can use to help children to learn more effectively. Everyday teachers use tests, assignments and activities to see how well students are learning, and to make programming decisions. The Provincial test is designed to be a "snapshot of learning" used along with teachers' assessments to give teachers and parents a clear picture of students' knowledge and skills. The assessment measures how well students have met the provincial expectations in reading, writing and math. The students' work is marked according to the four levels of achievement (1-4) with level 3 representing the expected standard. All Grade 3 and 6 students are required to participate in the EQAO assessment. It is based on the provincial curriculum and is considered to be part of the regular program. In very rare situations, students may be exempted from all or part of the assessment.

The use of real-world problems requires students to use factual knowledge to apply, organize and communicate what they know and show what they can do by using pictures, numbers and words.

While the EQAO results provide us with valuable information about individual students, we must exercise caution when reviewing the results for the following reason:

- Schools are different and serve dramatically different populations.
- Some schools may have a significant population for whom English is a second language.
- Groups of students, either in Grade 3 or Grade 6, may have stronger or weaker skills.

While the results may vary from year to year, we want the long-term trend to highlight steady improvement. We are committed to a long-term plan that will benefit our students both now and in the future. Red Maple Public School has a high-calibre, professional staff who are dedicated to the improvement of student learning. We will, as always continue to work closely with parents as partners in the education of the children we both share.

For more information go to www.eqao.com

Parking Lot Safety

With the increase in student population at Red Maple, we have seen an increase in the traffic around the school. We are asking for your support in walking/bicycling to and from the school. Thank you for your cooperation!

New* Kiss 'n' Ride Morning Procedure @ Red Maple

In order to increase the safety and efficiency of our Kiss 'n' ride morning drop off at Red Maple we have made some changes to our drop off procedure. Beginning Tuesday October 23rd the following changes will be in effect.

- There will be no parking allowed on the east side of the roadway in front of the school including the bus lanes in front of the kindergarten pens. Staff on duty in the morning will support students as they exit their vehicles and enter the sidewalk
- Parents / Caregivers will be encouraged to stay in their vehicles and have their children exit the vehicles on the eastside, facing the school. If younger students are in car seats parents can assist them to speed up the transition.
- Kiss and Ride program is intended for parents who are dropping off or picking up their child(ren). It is NOT intended for individuals who want to leave their vehicle to walk their child(ren) into the school.
- If you want to accompany your child, please park your vehicle in the south parking lot and walk your child to the school yard/kindergarten gate.

All pedestrian traffic will be encouraged to use the crosswalk located at the north end of the parking lot to cross over from the parking lot to the school sidewalk.

Thank you for your support in making our Red Maple parking lot a safe space for students, staff and visitors to our school.

Our Touchstone

We are Red Maple, a growing community of learners who takes responsibility for our actions, words, behaviour, and education.

Together, we stand up for what is right and work hard to achieve our goals.

We celebrate the differences of our Red Maple family.

We show respect and kindness everyday, making our school a safe, caring, and fun place to learn.

This is the Red Maple way.

Next School Council Meeting

*Monday,
November 5th
at 7:00 pm*



PICTURE DAY IS COMING!

Please send your
child to school with
their best smiles on

**Tuesday, October
23rd**

For Picture Day!



MATHLETES IS COMING SOON TO RED MAPLE!

On Wednesday November 7th and Thursday November 8th, students in Grades 2-7 will be participating in an engaging Math workshop run by “**Mathletes**”. This fun, engaging and educational program will be running right here in gym A. The Grade 8 students will be involved as coaches for this event. Students will have fun while participating in an engaging atmosphere that promotes collaboration, learning and thinking. This full day event will leave everyone wishing that everyday can be a Mathletes day.

This year we are excited to be hosting “**Mathletes Family Edition**”. Students and their families are encouraged to join us for an evening of Math Fun & Games on **Thursday November 8th** in the gym. **Registration is at 5:30 with activities between 5:45-7:15.**

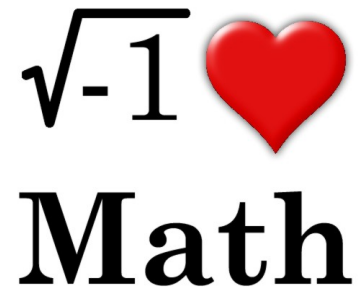
Please use the link to sign up for this fabulous event:

<https://goo.gl/forms/NBKjvXnLpRLRLdds1>

We would like to thank School Council for their generous support of this program. We appreciate their continued support to help enhance student achievement at Red Maple.

Thank you for supporting your child's love of learning math.

For additional information please visit <https://mathletes.ca/>



Terry Fox Run/Walk

On Friday, October 5th Red Maple staff and students participated in the Terry Fox run.

Students also purchased freezies, and donated toonies to the Terry Fox Foundation.

We are pleased to let you know that Red Maple raised over \$1,100.00 !!

Thank you Red Maple families for supporting this worthwhile event.



HALLOWEEN IS COMING! PLEASE REMEMBER THE SCHOOL'S PEANUT AND NUT BAN

As Halloween is quickly approaching we would like to remind you that Red Maple Public School is a **Nut Safe School**.

Please remember that several of our children will experience anaphylactic shock if they are exposed to even a tiny amount of peanut oil or peanut butter. In fact, some children will go into anaphylactic shock if they even smell peanuts or peanut products. When this happens, the child must be immediately injected with an epi-pen and then transported to the hospital for emergency treatment. If treatment is not given immediately, the results can be fatal.



For this reason the school **MUST** be a **PEANUT AND NUT-SAFE ZONE**. What this means is that no peanut or peanut products of any kind may be brought into the school. We are asking for your assistance in dealing with these children's allergies. Talking about the situation with your children will also help, since the more information they



HALLOWEEN COSTUMES

Under the Province Safe School legislation, students may not bring toy replicas or other items resembling guns, knives or any other weapons, as accessories to their Halloween costumes. Such items may cause unnecessary fear, anxiety and misunderstanding and must be kept away from the school. In addition, staff will remind students that they cannot bring to school any toy costume accessories, including fake blood, as part of their Halloween costume.

This applies to all students at all levels, including Kindergarten. Please note that while the celebration of "Halloween" is not part of Ontario Curriculum, some classes may choose to weave Halloween celebrations and/or traditions as part of the daily work and curriculum expectations for specific grades. Individual teachers may send notes home to inform you of expectations and / or options for wearing a costume. Regular instruction and programming will continue as we take extra care to be inclusive in our practice at school and to ensure that everyone feels safe as per Board policy and protocol. If you have any concerns / questions, please don't hesitate to let your child's teacher know.

In addition, following Halloween, please refrain from having your children bring candies to school. Aside from the candies not being a healthy snack choice, they also may contain nuts, peanuts or other allergens. Please remember that food items are never to be shared at school. Please check the snack ingredients carefully if you choose to send it to school for your child only. Thank you for your understanding. As always, if you have questions, please contact your child's teacher or a member of the administration at the school.



Student Safety is Our Priority

Please be advised that if you are planning on picking up your child from school early or, if you are dropping off a lunch for your child, we request that you report to the office.

Red Maple Public School is a community school that values the partnership that we have with parents. We want to continue to offer an open door policy yet ensure that we do not compromise the safety and instruction of our students.

Thanks for your support.

ELL @ Red Maple

September has been a busy month in ELL at Red Maple Public School. We would like to extend a warm welcome to our many new families-WELCOME!!

Promoting a love of reading is important for all learners. We encourage parents to read with their children in their first language. Please see the suggestions in the article below.

English Language Learners Use dual-language books to boost your child's literacy

Learn about the many benefits of dual-language books.

Find out how you can use your first language to boost your child's English reading and comprehension.

How does knowledge of first language help my child learn English?

- continued development of the first language supports linguistic and cognitive development in English
- it allows students to think, talk, read and write at a higher level
- students who already have knowledge of one language have a useful tool when learning a new language

If my child continues to use his/her first language, will that affect his/her identity?

- students' first language is an important part of their identity and a source of cultural pride
- cultural identity may be lost if students are encouraged to move away from their first language and culture and be more a part of the dominant culture
- self esteem may be affected if they are encouraged to use English only

How can I use my first language to help with my child's education?

- parents can help by creating a rich first language home environment e.g. telling stories and reading to children in the first language , participating in first-language community events, watching and discussing current affairs programs on TV, reading first language newspapers
- discuss homework and/or explain subject matter in first language if that helps your child better understand what he/she is expected to do/learn

Why should I read dual language texts books with my child?

- children who can already read in their first language do not need to rediscover the principles of reading when they learn another language e.g. concepts of rhyme, figurative language, verb tenses etc.
- it expands your child's knowledge of the first language, which helps the learning of English
- it enhances your child's self-esteem and their status as they demonstrate their skills and show their talents
- by helping your child create his/her own dual-language stories, you are able to take an active role in your child's education
- children may be able to show their understanding of an age appropriate story more clearly than if he/she were limited to English only books

How do I use dual-language books with my child?

- together with your child, choose books that are high interest, and that reflect your cultural values
- if your child cannot yet read then you can read both versions of the story to promote both languages
- if your child cannot fluently read in the first language, then he/she can read the English version and you read the first language version
- ensure they are understanding the story by asking questions and discussing the story in your first language during and after you read

Where can I find more dual language resources?

- many Canadian publishers create dual language books which are available at our school or the Richmond Hill Public Library
- (Adapted from: Making a Difference in Literacy and Beyond, Peel District School Board)

Life @ the Red Maple Learning Commons

Teacher-Librarian: Ms. Polsinelli

“Converting your school library to a learning commons is one of the best recipes for school success in the current climate of educational reform.



The library-as-learning commons functions as the hub of the school, where teachers and students collaborate, inquiry-based learning is promoted, and teacher-librarians provide instructional support to every teacher in the school while fostering a thriving reading culture.”

Photo: Nicholas Monu (iStock)

First published in Education Canada, January 2014

The Learning Commons is a shared facility with Saint John Paul II School. Both the Red Maple and Saint John Paul II school books are integrated so the entire collection is open to all.

Red Maple has full access to the library on Mondays, Wednesdays and alternate Fridays.

Primary, Junior and Intermediate classes have scheduled weekly book exchange times.

We are fully automated. All library materials are checked in/out by a barcode scanner attached to the computer on the circulation desk. Every student has their own patron barcode which is kept in a binder on the circulation desk. All students in Grades K-2 are provided with book bags in which to carry their books.

WANT TO SEARCH THE RED MAPLE/SAINT JOHN PAUL II LIBRARY CATALOGUE?

www.redmaple.ps.yrdsb.edu.on.ca/library/

Here are some online tools available for at home use:



OverDrive provides fun and informative age-appropriate popular fiction and non-fiction in a permanent always growing York Region District School Board eLibrary. Picture books, read along books, simple chapter books, graphic novels and much more are available for staff and students to be borrowed.

E-Books can be read in any web browser (e.g. Google Chrome, Firefox, Safari) on mobile and desktop devices at school and can also be accessed at home in the same manner.

Link to access Overdrive Collection: <http://yrdsb.lib.overdrive.com/>

Student Access: 0 (student number)

On-line tools continued...



Login: dsbyork **Password:** dsby7692

word: reads



Login: redmaple **Pass-**



[Gale Databases](#) Password: york



[Encyclopedia Britannica](#) Username: dsbyork Password:

dsby7692



[Learn 360](#) Username: yorkrdsb Password: digital

Makerspace

What is an Ozobot, Beebot or Makedo? These are just a few of the exciting activities in our Makerspace. Students will have an opportunity to enjoy our new STEM challenges when they visit the Learning Commons Makerspace recess.

Scholastic Book Fair in November

Once again Red Maple Public Learning Commons will be hosting our annual Scholastic Book Fair, stay tuned for more information to follow. A big thanks to Ms. Dankev's class who has volunteered to help with advertising this event!

OCTOBER IS INTERNATIONAL SCHOOL LIBRARY MONTH

Stay tuned for some fun incentives and contests



Thank-you for your continued support of our Learning Commons,
Happy Reading!

Ms. Polsinelli, Teacher-Librarian



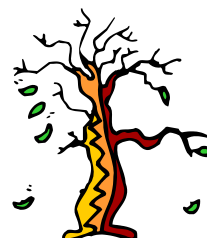
OCTOBER 2018







Sun	Mon	Tue	Wed	Thu	Fri	Sat
	1 <i>School Council Meeting</i> 7:00 pm	2	3	4	5 <i>TERRY FOX RUN</i> 	6
7	8 <i>THANKSGIVING</i> 	9	10	11 <i>Meet the Teacher Barbecue</i> 4:30—7:30 	12	13
14	15	16	17 <i>PIZZA DAY</i> 	18	20	20
21	22 <i>PA DAY</i> <i>No School</i>	23 <i>PICTURE DAY</i> 	24 <i>Intermediate Volleyball Tournament</i>	25 <i>Intermediate Volleyball Tournament</i>	26 <i>Fall Dance-A-Thon</i> 	27
28	29	30	31 			



November 2018



Sun	Mon	Tue	Wed	Thu	Fri	Sat
				1	2	3
4	5 PARENT COUNCIL MEETING 7:00 PM	6	7  PIZZA LUNCH MATHLETES	8 MATHLETES Family Math Night	9	10
11	12	13	14 	15	16	17
18	19	20 Progress Reports Go Home 	21	22 Parent Teacher Interview Night	23 PA DAY NO SCHOOL Parent Teacher Interview Day	24
25	26	27	28 PIZZA LUNCH 	29	30	